

NAMUR Mounted, 1/4", Type J25 Pilot Valve



Description

Pilot valve designed for direct mounting onto 1/4 turn pneumatically operated valve actuators meeting 'NAMUR' standard fixing dimensions.

Features

- Top face air connection.
- 1/4" BSP mains air connection and 1/8" BSP pilot port.
- Integrated Exhaust to Spring (ETS) feature in 3/2 position.
- Single pilot spring return function or double pilot stay put function.

Conversion Facility

- Built in 3/2 to 5/2 function conversion facility for spring return and double acting actuators respectively. (see reverse)



Product Code :

J
2
5
●
●
P
0
0
0
0

Operator

See below for product code details

Any of the below options that are not required enter '0' in relevant box.

Operator

Options:

Code:

Single pilot spring return

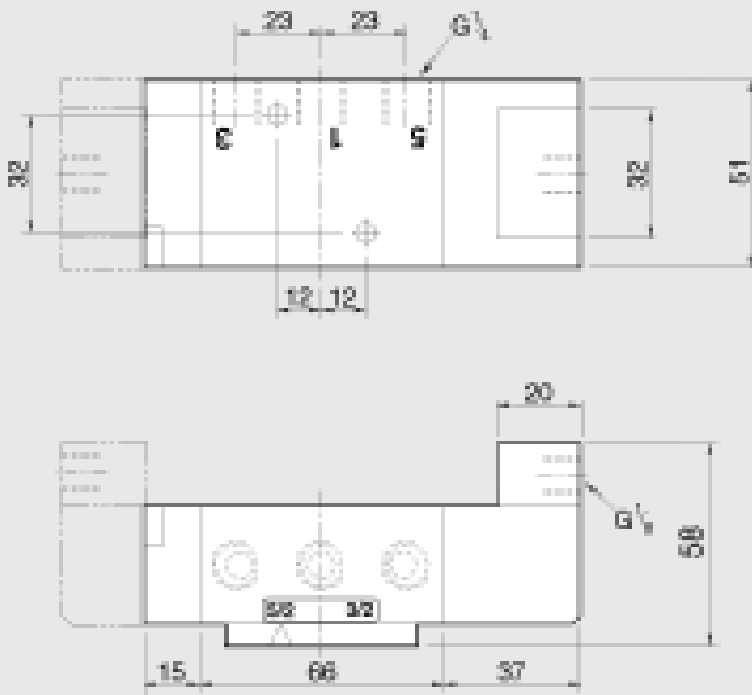
8 0

Double pilot stay put

9 0

NAMUR Mounted, 1/4", Type J25 Pilot Valve

RGS



Conversion Facility :

Valve is fitted with a change over plate which allows the valve to be converted from 3/2 to 5/2 function quickly and easily.

In 3/2 function a proportion of clean air exhausting from the actuator is fed back in to the spring chamber.

Material Specification	Standard
Body and End Caps	Black Anodised Aluminium (Dural)
Spool	Hard Anodised Aluminium PTFE impregnated
Spacers	Glass filled Acetal
Seals	Nitrile
Spring	Stainless Steel
Mounting Screws	Stainless Steel
Change over plate	Nylon 66 30% glass filled
Gasket	Nitrile

Valve Specification	Standard
Port Connection Size	1/4" BSP
Pilot Port Connection Size	1/8" BSP
Working Pressure	0 to 8 bar
Pilot Signal Pressure	3 to 8 bar
Cv Factor	1.2
Flow Rate (at 6 bar with 1 bar pressure drop)	1246 l/min
Maximum Ambient Temperature	+60°C
Minimum Working Temperature	-10°C