

# Banjo Mounted, 1/8", 3/2 Function Solenoid Valve

**RGS**

## Description

3 port 2 position direct acting, solenoid valve designed for direct banjo bolt mounting onto 1/4 turn pneumatically operated valve actuators having 1/8" BSP ports.

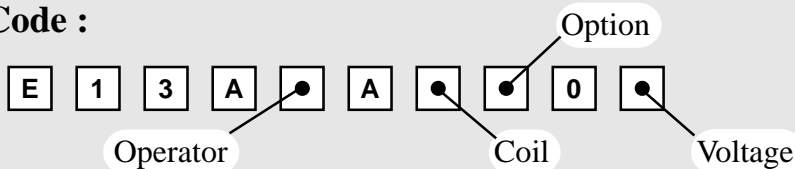
## Features

- Convenient single 1/8" BSP Banjo bolt connection.
- Interchangeable coils, including various hazardous area options.
- 1/4" BSP mains air connection and 1/8" BSP exhaust port.
- Pilot Exhaust Dust Caps fitted as standard.



Valve is illustrated with a Plug & Socket Coil

## Product Code :

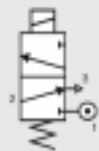


See below for product code details  
Any of the below options that are not required enter '0' in relevant box.

## Operator

### Options:

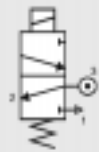
Spring return, normally closed



### Code:

**X**

Spring return, normally open



**Y**

## Option

### Options:

Push Button Manual Override

**D**

Lever Manual Override

**C**

Tamperproof Manual Override

**1**

No Option Required

**0**

## Coil

### Coil:

### Code:

EExia (BASEEFA)

**A**

EExm

### Code:

**9**

EExia (FM)

**U**

ExN

**N**

EExia (SAA)

**W**

Plug & Socket

**P**

EExia (CSA)

**V**

Terminal Box

**B**

EExd

**D**

No Coil (with jet)

**2**

No Coil (no jet)

**0**

## Voltage

### Voltage:

12v DC

**A**

24v AC (50/60 Hz)

**R**

12v DC Low Power

**G**

48v AC (50/60 Hz)

**S**

24v DC

**B**

110v AC (50/60 Hz)

**T**

24v DC Low Power

**H**

240v AC (50/60 Hz)

**U**

No Voltage (no coil)

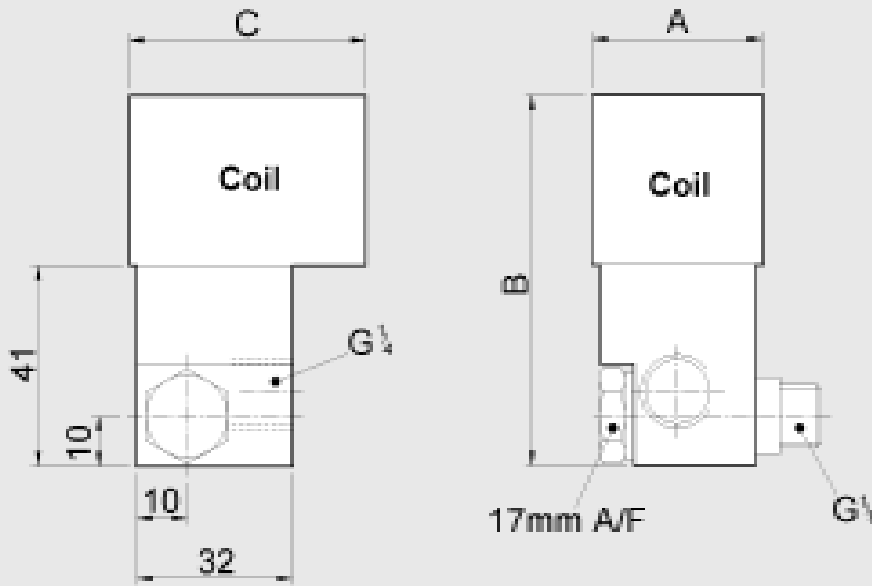
**0**

415v AC (50/60 Hz)

**3**

# Banjo Mounted, 1/8", 3/2 Function Solenoid Valve

RGS



Coil Type	Dimensions (mm)		
	A	B	C
Plug & Socket	35	96	75
Terminal Box	35	96	65
ExN	35	96	65
EExd	52	116	85
EExia	35	116	65
EExm	35	96	72

Material Specification	Standard
Body	Black Anodised Aluminium (Dural)
Banjo Bolt	Brass Nickel Plated
Jet	Brass
Seals	Nitrile & Viton

Valve Specification	Standard
Inlet Port Connection Size	1/4" BSP
Exhaust Port Connection Size	1/8" BSP
Working Pressure	0 to 8 bar
Cv Factor	0.06 (0.04 Intrinsically safe coil)
Flow Rate (at 6 bar with 1 bar pressure drop)	62 l/min
Flow Rate (at 6 bar with 1 bar pressure drop)	42 l/min (Intrinsically safe coil)
Maximum Ambient Temperature	+60°C
Minimum Working Temperature	-10°C

## Non-Standard Features and Options

There are non-standard alternatives available in addition to those listed within this datasheet for:

- Material Specification
- Valve Specification
- Options
- Voltages

Please refer to Section 9 in this catalogue for details of these alternatives.

Coil Type	Plug & Socket	Terminal Box	ExN	EExd	EExm	EExia
Area Class	Safe	Safe	Zone 2	Zones 1 & 2	Zones 1 & 2	Zones 0, 1 & 2
Area Category	N/A	N/A	ExN II T4/T6	EExd IIC T4/T6	EExm IIC T5	EExia IIC T6
Ingress Protection	IP65	IP65	IP65	IP66	IP65	IP65
Cable Entry	PG.9	M20 x 1.5	M20 x 1.5	M20 x 1.5	Flying Leads	M20 x 1.5
Ambient Temp.	-10 to 60 C	-10 to 60 C	-10 to 40 C	-10 to 40 C	-10 to 65 C	-10 to 65 C
Coil Class	F	F	F	F	F	F