

# Direct Acting, 1/8", 3/2 Function Solenoid Valve

**RGS**

## Description

3 port 2 position direct acting, spring return solenoid valve, available in normally closed or normally open configuration, for the operation of single acting pneumatic devices.

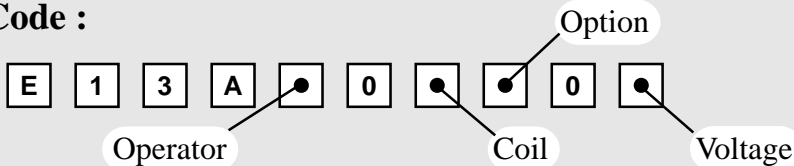
## Features

- Individual or Direct Relay mounting.
- Interchangeable coils, including various hazardous area options.
- Pilot Exhaust Dust Caps fitted as standard.



Valve is illustrated with ExN Type coil unit

## Product Code :

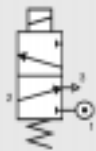


See below for product code details  
Any of the below options that are not required enter '0' in relevant box.

### Operator

#### Options:

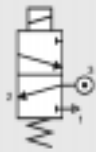
Spring return, normally closed



#### Code:

**X**

Spring return, normally open



**Y**

### Option

#### Options:

Lever Manual Override

**C**

Push Button Manual Override

**D**

Tamperproof Manual Override

**1**

No Option Required

**0**

### Coil

#### Coil:

#### Code:

EExia (BASEEFA)

**A**

EExm

#### Code:

**9**

EExia (FM)

**U**

ExN

**N**

EExia (SAA)

**W**

Plug & Socket

**P**

EExia (CSA)

**V**

Terminal Box

**B**

EExd

**D**

No Coil (with jet)

**2**

No Coil (no jet)

**0**

### Voltage

#### Voltage:

12v DC

**A**

24v AC (50/60 Hz)

**R**

12v DC Low Power

**G**

48v AC (50/60 Hz)

**S**

24v DC

**B**

110v AC (50/60 Hz)

**T**

24v DC Low Power

**H**

240v AC (50/60 Hz)

**U**

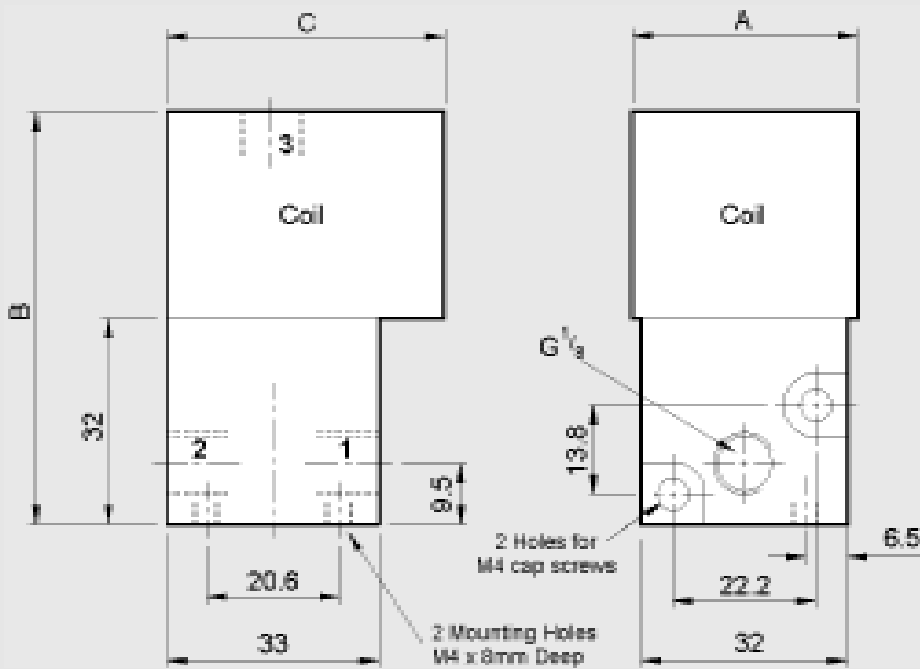
No Voltage (no coil)

**0**

415v AC (50/60 Hz)

**3**

# Direct Acting, 1/8", 3/2 Function Solenoid Valve



Coil Type	Dimensions (mm)		
	A	B	C
Plug & Socket	35	77	75
Terminal Box	35	77	65
ExN	35	77	65
EExd	52	107	85
EExia	35	107	65
EExm	35	87	72

Material Specification	Standard
Body	Black Anodised Aluminium (Dural)
Jet	Brass

Valve Specification	Standard
Port Connection Size	1/8" BSP
Working Pressure	0 to 8 bar
Cv Factor	0.06 (0.04 Intrinsically safe coil)
Flow Rate (at 6 bar with 1 bar pressure drop)	62 l/min
Flow Rate (at 6 bar with 1 bar pressure drop)	42 l/min (Intrinsically safe coil)
Maximum Ambient Temperature	+60°C
Minimum Working Temperature	-10°C

## Non-Standard Features and Options

There are non-standard alternatives available in addition to those listed within this datasheet for:

- Material Specification
- Valve Specification
- Options
- Voltages

Please refer to Section 9 in this catalogue for details of these alternatives.

Coil Type	Plug & Socket	Terminal Box	ExN	EExd	EExm	EExia
Area Class	Safe	Safe	Zone 2	Zones 1 & 2	Zones 1 & 2	Zones 0, 1 & 2
Area Category	N/A	N/A	ExN II T4/T6	EExd IIC T4/T6	EExm IIC T5	EExia IIC T6
Ingress Protection	IP65	IP65	IP65	IP66	IP65	IP65
Cable Entry	PG.9	M20 x 1.5	M20 x 1.5	M20 x 1.5	Flying Leads	M20 x 1.5
Ambient Temp.	-10 to 60 C	-10 to 60 C	-10 to 40 C	-10 to 40 C	-10 to 65 C	-10 to 65 C
Coil Class	F	F	F	F	F	F