

# Gang Mounted, Direct Acting, 1/8", 3/2 function Solenoid Valve



## Description

Gang mounted, 3 port 2 position direct acting solenoid valves, available in normally closed or normally open configuration, for the operation of single acting pneumatic devices.

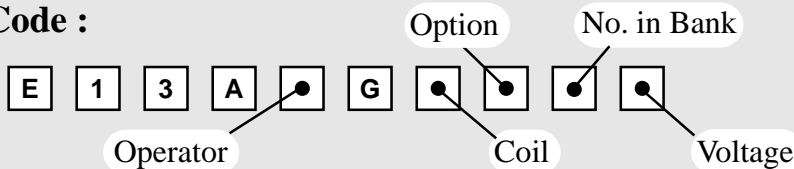
## Features

- Single air inlet connection port.
- Interchangeable coils, including various hazardous area options.
- Pilot Exhaust Dust Caps fitted as Standard.



Valves are illustrated with Plug & Socket coil units

## Product Code :

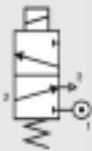


See below for product code details  
Any of the below options that are not required enter '0' in relevant box.

### Operator

#### Options:

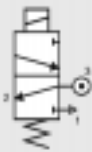
Spring return, normally closed



#### Code:

**X**

Spring return, normally open



**Y**

### Option

#### Options:

Lever Manual Override

**C**

Push Button Manual Override

**D**

Tamperproof Manual Override

**1**

No Option Required

**0**

### No. in Bank

#### Options:

Bank of two (2)

**2**

Bank of three (3)

**3**

etc ....

Bank of eight (8)

**8**

Bank of nine (9)

**9**

Bank of ten (10)

**A**

### Coil

#### Coil:

#### Code:

EExia (BASEEFA)

**A**

#### Coil:

#### Code:

EExm

**9**

EExia (FM)

**U**

ExN

**N**

EExia (SAA)

**W**

Plug & Socket

**P**

EExia (CSA)

**V**

Terminal Box

**B**

EExd

**D**

No Coil (with jet)

**2**

No Coil (no jet)

**0**

### Voltage

#### Voltage:

12v DC

**A**

12v DC Low Power

**G**

24v DC

**B**

24v DC Low Power

**H**

No Voltage (no coil)

**0**

#### Code:

#### Voltage:

24v AC (50/60 Hz)

**R**

48v AC (50/60 Hz)

**S**

110v AC (50/60 Hz)

**T**

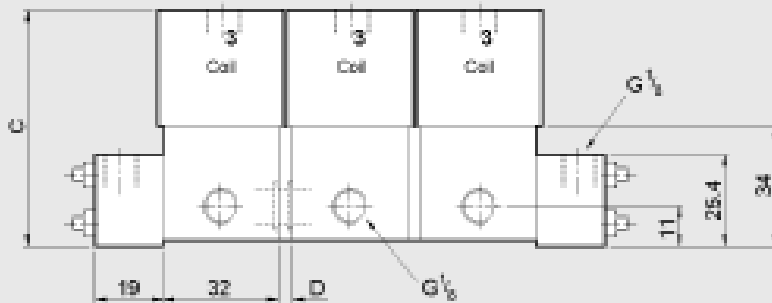
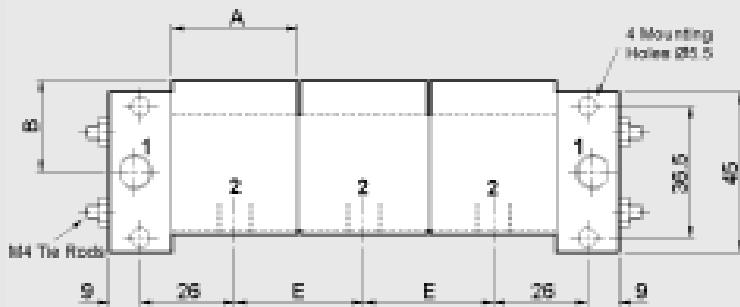
240v AC (50/60 Hz)

**U**

415v AC (50/60 Hz)

**3**

# Gang Mounted, Direct Acting, 1/8", 3/2 function Solenoid Valve



Coil Type	Dimensions (mm)				
	A	B	C	D	E
Plug & Socket	35	58	89	4	36
Terminal Box	35	48	89	4	36
ExN	35	48	89	4	36
EExd	52	68	109	23	55
	35	48	109	4	36
	35	55	89	4	36

Material Specification	Standard
Body	Black Anodised Aluminium (Dural)
Jet	Brass
End Blocks	Black Anodised Aluminium (Dural)
Tie Rods & Nuts	Stainless Steel

Valve Specification	Standard
Port Connection Size	1/8" BSP
Working Pressure	0 to 8 bar
Cv Factor	0.06 (0.04 Intrinsically safe coil)
Flow Rate (at 6 bar with 1 bar pressure drop)	62 l/min
Flow Rate (at 6 bar with 1 bar pressure drop)	42 l/min (Intrinsically safe coil)
Maximum Ambient Temperature	+60°C
Minimum Working Temperature	-10°C

## Non-Standard Features and Options

There are non-standard alternatives available in addition to those listed within this datasheet for:

- Material Specification
- Valve Specification
- Options
- Voltages

Please refer to Section 9 in this catalogue for details of these alternatives.

Coil Type	Plug & Socket	Terminal Box	ExN	EExd	EExm	EExia
Area Class	Safe	Safe	Zone 2	Zones 1 & 2	Zones 1 & 2	Zones 0, 1 & 2
Area Category	N/A	N/A	ExN II T4/T6	EExd IIC T4/T6	EExm IIC T5	EExia IIC T6
Ingress Protection	IP65	IP65	IP65	IP66	IP65	IP65
Cable Entry	PG.9	M20 x 1.5	M20 x 1.5	M20 x 1.5	Flying Leads	M20 x 1.5
Ambient Temp.	-10 to 60 C	-10 to 60 C	-10 to 40 C	-10 to 40 C	-10 to 65 C	-10 to 65 C
Coil Class	F	F	F	F	F	F