

# Remote Mounted, Low Pressure, 1/8", 3/2 Function Solenoid Valve



## Description

3 port 2 position, low pressure pilot operated solenoid valve.

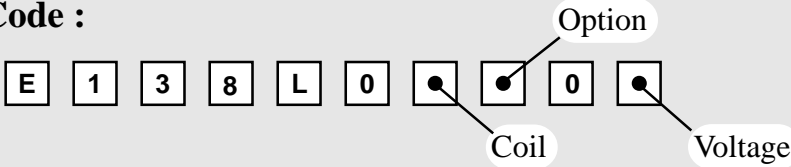
## Features

- External pilot air connection.
- Interchangeable coils, including various hazardous area options.
- Single coil spring return function.
- Convenient fixing holes to enable bracket mounting.
- Pilot Exhaust Dust Caps fitted as standard.



Valve is illustrated with a  
Intrinsically safe coil

## Product Code :



See below for product code details  
Any of the below options that are not required enter '0' in relevant box.



### Coil

Coil:	Code:	Coil:	Code:
EExia (BASEEFA)	<b>A</b>	EExm	<b>9</b>
EExia (FM)	<b>U</b>	ExN	<b>N</b>
EExia (SAA)	<b>W</b>	Plug & Socket	<b>P</b>
EExia (CSA)	<b>V</b>	MC30	<b>K</b>
EExd	<b>D</b>	Terminal Box	<b>B</b>
No Coil (no jet)	<b>0</b>	No Coil (with jet)	<b>2</b>

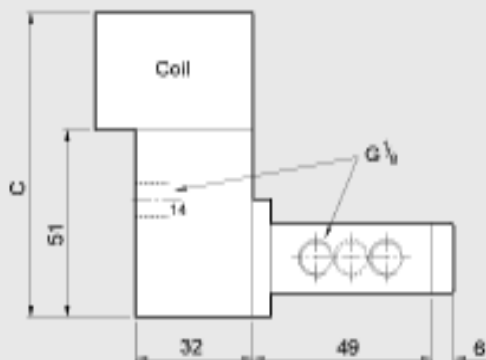
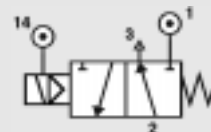
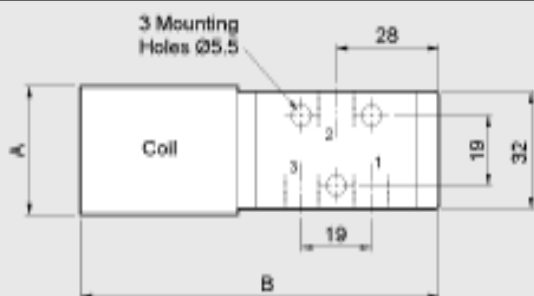
### Option

Options:	Code:
Lever Manual Override	<b>C</b>
Push Button Manual Override	<b>D</b>
Tamperproof Manual Override	<b>1</b>
No Option Required	<b>0</b>

### Voltage

Voltage:	Code:	Voltage:	Code:
12v DC	<b>A</b>	24v AC (50/60 Hz)	<b>R</b>
12v DC Low Power	<b>G</b>	48v AC (50/60 Hz)	<b>S</b>
24v DC	<b>B</b>	110v AC (50/60 Hz)	<b>T</b>
24v DC Low Power	<b>H</b>	240v AC (50/60 Hz)	<b>U</b>
No Voltage (no coil)	<b>0</b>	415v AC (50/60 Hz)	<b>3</b>

# Remote Mounted, Low Pressure, 1/8", 3/2 Function Solenoid Valve



Dimensions (mm)

Coil Type	A	B	C
Plug & Socket	35	130	106
MC30	30	121	105
Terminal Box	35	120	106
ExN	35	120	106
EExd	52	140	126
EExia	35	120	126
EExm	35	127	106

Material Specification	Standard
Body and End Caps	Black Anodised Aluminium (Dural)
Low Pressure Pilot End Cap	Natural Anodised Aluminium (Dural)
Spool	Hard Anodised Aluminium PTFE impregnated
Jet	Brass
Spacers	Glass filled Acetal
Seals	Nitrile
Spring	Stainless Steel

## Non-Standard Features and Options

There are non-standard alternatives available in addition to those listed within this datasheet for:

- Material Specification
- Valve Specification
- Options
- Voltages

Please refer to Section 9 in this catalogue for details of these alternatives.

Valve Specification	Standard
Port Connection Size	1/8" BSP
Working Pressure	0 to 8 bar
Minimum External Pilot Pressure	1.5 bar
Cv Factor	0.3
Flow Rate (at 6 bar with 1 bar pressure drop)	311 l/min
Maximum Ambient Temperature	+60°C
Minimum Working Temperature	-10°C

Coil Type	Plug & Socket	Terminal Box	ExN	EExd	EExm	EExia
Area Class	Safe	Safe	Zone 2	Zones 1 & 2	Zones 1 & 2	Zones 0, 1 & 2
Area Category	N/A	N/A	ExN II T4/T6	EExd IIC T4/T6	EExm IIC T5	EExia IIC T6
Ingress Protection	IP65	IP65	IP65	IP66	IP65	IP65
Cable Entry	PG.9	M20 x 1.5	M20 x 1.5	M20 x 1.5	Flying Leads	M20 x 1.5
Ambient Temp.	-10 to 60°C	-10 to 60°C	-10 to 40°C	-10 to 40°C	-10 to 65°C	-10 to 65°C
Coil Class	F	F	F	F	F	F