

# Direct Acting, 1/4", 3/2 Function Solenoid Valve

**RGS**

## Description

3 way direct acting, solenoid valve available in normally closed or normally open configuration, for the operation of single acting pneumatic devices.

## Features

- Individual or Direct Relay mounting.



Valve is illustrated with Plug & Socket type Coil.

## Product Code :

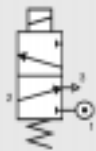


See below for product code details  
Any of the below options that are not required enter '0' in relevant box.

### Operator

#### Options:

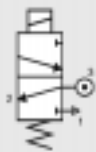
Spring return, normally closed



#### Code:

**X**

Spring return, normally open



**Y**

### Option

#### Options:

Lever Manual Override

**C**

Push Button Manual Override

**D**

Tamperproof Manual Override

**1**

No Option Required

**0**

### Voltage

#### Voltage:

12v DC

#### Code:

**A**

12v DC Low Power

**G**

24v DC

**B**

24v DC Low Power

**H**

No voltage (no coil)

**0**

#### Voltage:

24v AC (50/60 Hz)

#### Code:

**R**

48v AC (50/60 Hz)

**S**

110v AC (50/60 Hz)

**T**

240v AC (50/60 Hz)

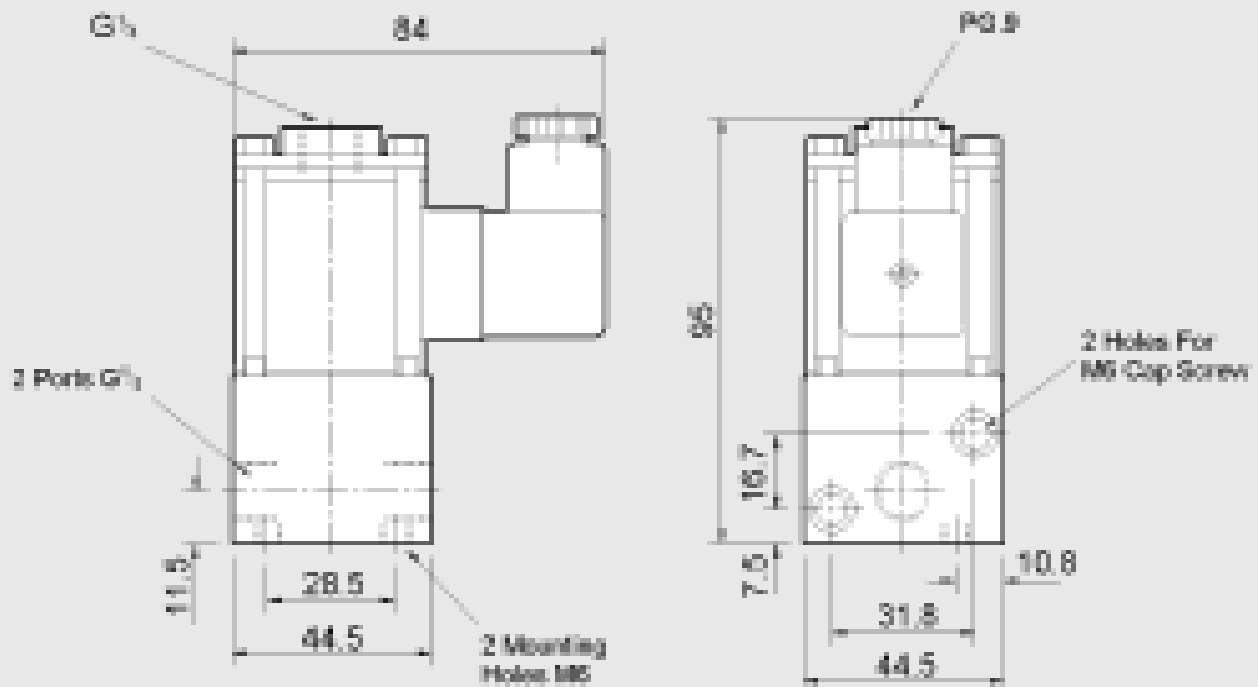
**U**

415v AC (50/60 Hz)

**3**

# Direct Acting, 1/4", 3/2 Function Solenoid Valve

**RGS**



Material Specification	Standard
Body	Black Anodised Aluminium (Dural)
Jet	Brass
Seals	Viton

Valve Specification	Standard
Port Connection Size	1/4" BSP
Working Pressure	0 to 8 bar
Cv Factor	0.18
Flow Rate (at 6 bar with 1 bar pressure drop)	187 l/min
Maximum Ambient Temperature	+60°C
Minimum Working Temperature	-10°C
Inlet orifice size	2.0
Exhaust orifice size	2.5

Coil Type	Plug & Socket
Area Class	Safe
Area Category	N/A
Ingress Protection	IP65
Cable Entry	PG.9
Ambient Temp.	-10 to 60°C
Coil Class	F

## Non-Standard Features and Options

There are non-standard alternatives available in addition to those listed within this datasheet for:

- Material Specification
- Valve Specification
- Options
- Voltages

Please refer to Section 9 in this catalogue for details of these alternatives.