

Gang Mounted, Direct Acting, 1/4", 3/2 function Solenoid Valve



Description

Gang Mounted, 3 port 2 position direct acting available in normally closed or normally open configuration solenoid valves, for the operation of single acting pneumatic devices.

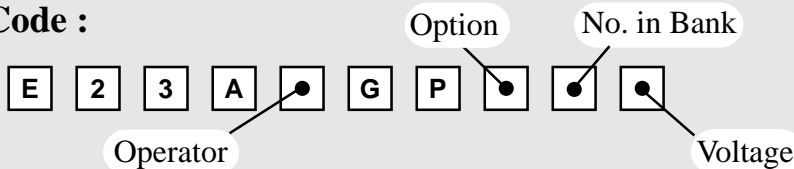
Features

- Single Air Inlet Connection Port.



Valves are illustrated with Plug & Socket coil units

Product Code :

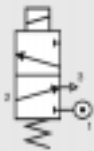


See below for product code details
Any of the below options that are not required enter '0' in relevant box.

Operator

Options:

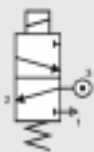
Spring return, normally closed



Code:

X

Spring return, normally open



Y

Option

Options:

Lever Manual Override

C

Push Button Manual Override

D

Tamperproof Manual Override

1

No Option Required

0

No. in Bank

Options:

Bank of two (2)

2

Bank of three (3)

3

etc

Bank of eight (8)

8

Bank of nine (9)

9

Bank of ten (10)

A

Voltage

Voltage:

12v DC

Code:

A

12v DC Low Power

G

24v DC

B

24v DC Low Power

H

No Voltage (no coil)

0

Voltage:

24v AC (50/60 Hz)

R

48v AC (50/60 Hz)

S

110v AC (50/60 Hz)

T

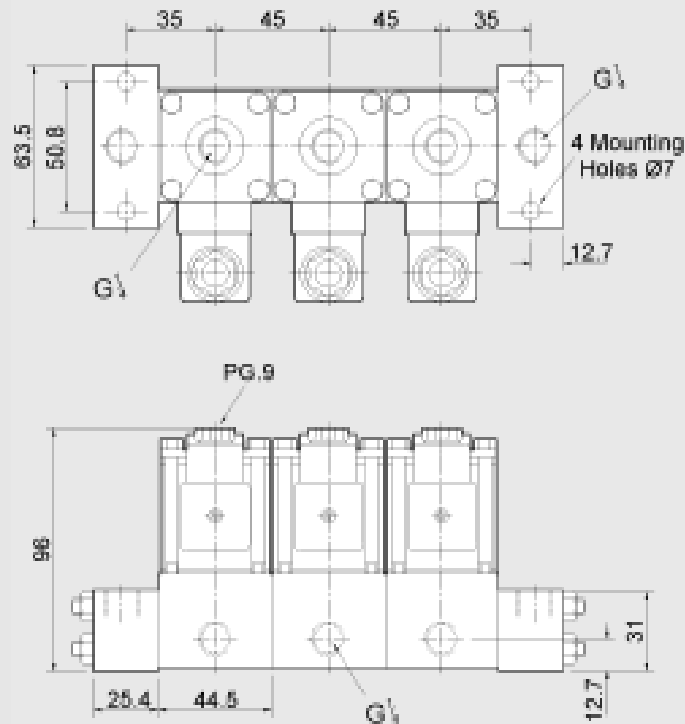
240v AC (50/60 Hz)

U

415v AC (50/60 Hz)

3

Gang Mounted, Direct Acting, 1/4", 3/2 function Solenoid Valve



Material Specification	Standard
Body	Black Anodised Aluminium (Dural)
Jet	Brass
Tie Rods & Nuts	Stainless Steel
End Blocks	Black Anodised Aluminium (Dural)

Valve Specification	Standard
Port Connection Size	1/4" BSP
Working Pressure	0 to 8 bar
Cv Factor	0.18
Flow Rate (at 6 bar with 1 bar pressure drop)	187 l/min
Maximum Ambient Temperature	+60°C
Minimum Working Temperature	-10°C
Inlet Orifice Size	2.0 mm
Exhaust Orifice Size	2.5 mm

Coil Type	Plug & Socket
Area Class	Safe
Area Category	N/A
Ingress Protection	IP65
Cable Entry	PG.9
Ambient Temp.	-10 to 60°C
Coil Class	F

Non-Standard Features and Options

There are non-standard alternatives available in addition to those listed within this datasheet for:

- Material Specification
- Valve Specification
- Options
- Voltages

Please refer to Section 9 in this catalogue for details of these alternatives.