

Remote Mounting, 1/4", 3/2 Function Solenoid Valve

RGS

Description

3 port 2 position, pilot operated solenoid valve.

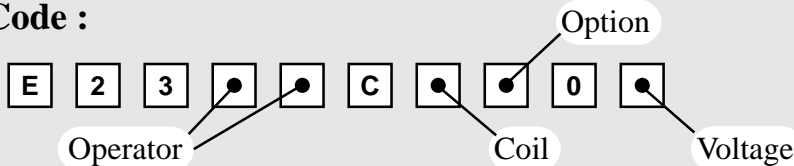
Features

- Internal or External pilot air connection.
- Interchangeable coils, including various hazardous area options.
- Single coil spring return function or double coil stay put function.
- Convenient fixing holes to enable bracket mounting.
- Pilot Exhaust Dust Caps fitted as standard.
- Interchangeable CNOMO interface coil units, including hazardous area options.



Valve is illustrated with a Plug and Socket Coil

Product Code :

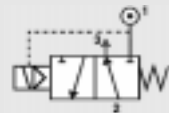


See below for product code details
Any of the below options that are not required enter '0' in relevant box.

Operator

Options:

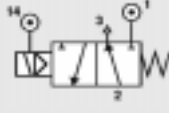
Spring return, internal pilot air feed



Code:

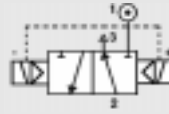
1 8

Spring return, external pilot air connection



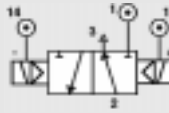
8 0

Double solenoid, internal pilot air feed



1 9

Double solenoid, external pilot air connection



9 0

Option

Options:

Screw Driver Override (Standard)

S

Lever Manual Override

C

Push Button Manual Override

D

No Option Required

0

Coil

Coil:

Code:

EExia (BASEEFA)

A

Coil:

Code:

EExm

9

EExia (FM)

U

ExN

N

EExia (SAA)

W

MC30

K

EExia (CSA)

V

Plug & Socket

P

EExd

D

Terminal Box

B

No Coil (with jet)

2

No Coil (no jet)

0

Voltage

Voltage:

Code:

12v DC

A

Voltage:

Code:

24v AC (50/60 Hz)

R

12v DC Low Power

G

48v AC (50/60 Hz)

S

24v DC

B

110v AC (50/60 Hz)

T

24v DC Low Power

H

240v AC (50/60 Hz)

U

No Voltage (no coil)

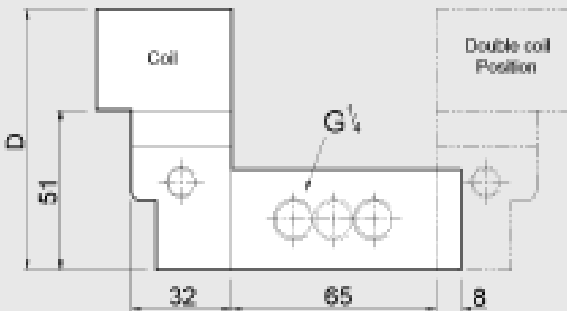
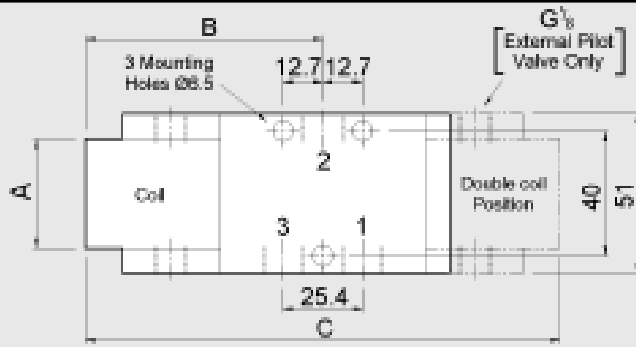
0

415v AC (50/60 Hz)

3

Remote Mounting, 1/4", 3/2 Function Solenoid Valve

RGS



Dimensions
(mm)

Coil Type	A	B	C	D
Plug & Socket	35	122	244	110
MC30	32	120	240	97
Terminal Box	35	122	244	102
ExN	35	122	244	102
EExd	52	137	274	117
EExia	35	130	260	102
EExm	35	116	232	106

Material Specification	Standard
Body and End Caps	Black Anodised Aluminium (Dural)
Spool	Hard Anodised Aluminium PTFE impregnated
Jet	Brass
Spacers	Glass filled Acetal
Seals	Nitrile
Spring	Stainless Steel

Valve Specification	Standard
Port Connection Size	1/4" BSP
Working Pressure Internal Pilot Version	3 to 8 bar
Working Pressure External Pilot Version	0 to 8 bar
Minimum External Pilot Pressure	3 bar
Cv Factor	1.2
Flow Rate (at 6 bar with 1 bar pressure drop)	1246 l/min
Maximum Ambient Temperature	+60°C
Minimum Working Temperature	-10°C

Non-Standard Features and Options

There are non-standard alternatives available in addition to those listed within this datasheet for:

- Material Specification
- Valve Specification
- Options
- Voltages

Please refer to Section 9 in this catalogue for details of these alternatives.

Coil Type	Plug & Socket	Terminal Box	ExN	EExd	EExm	EExia
Area Class	Safe	Safe	Zone 2	Zones 1 & 2	Zones 1 & 2	Zones 0, 1 & 2
Area Category	N/A	N/A	ExN II T4/T6	EExd IIC T4/T6	EExm IIC T5	EExia IIC T6
Ingress Protection	IP65	IP65	IP65	IP66	IP65	IP65
Cable Entry	PG.9	M20 x 1.5	M20 x 1.5	M20 x 1.5	Flying Leads	M20 x 1.5
Ambient Temp.	-10 to 60°C	-10 to 60°C	-10 to 40°C	-10 to 40°C	-10 to 65°C	-10 to 65°C
Coil Class	F	F	F	F	F	F