

Remote Mounting, 1/4", 3/2 Function Poppet Valve

RGS

Description

3 port 2 position, spring return Poppet solenoid valve.

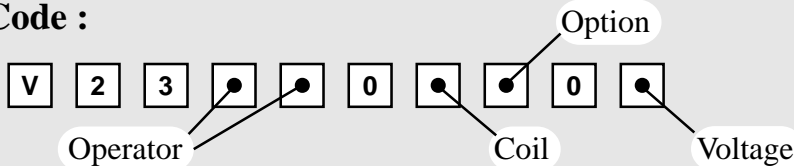
Features

- Internal or External pilot air connection
- Interchangeable coils, including various hazardous area options.
- Pilot Exhaust Dust Caps fitted as standard.



Valve is illustrated with an EExd Flameproof Coil

Product Code :

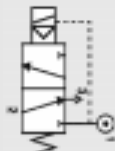


See below for product code details
Any of the below options that are not required enter '0' in relevant box.

Operator

Options:

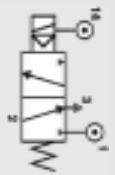
Spring return, internal pilot air feed



Code:

1 8

Spring return, external pilot air connection



8 0

Option

Options:

Lever Manual Override

C

Push Button Manual Override

D

Tamperproof Manual Override

1

No Option Required

0

Coil

Coil:

Code:

EExia (BASEEFA)

A

Coil:

Code:

EExm

9

EExia (FM)

U

ExN

N

EExia (SAA)

W

Plug & Socket

P

EExia (CSA)

V

Terminal Box

B

EExd

D

No Coil (no jet)

0

No Coil (with jet)

2

Voltage

Voltage:

Code:

12v DC

A

Voltage:

Code:

24v AC (50/60 Hz)

R

12v DC Low Power

G

48v AC (50/60 Hz)

S

24v DC

B

110v AC (50/60 Hz)

T

24v DC Low Power

H

240v AC (50/60 Hz)

U

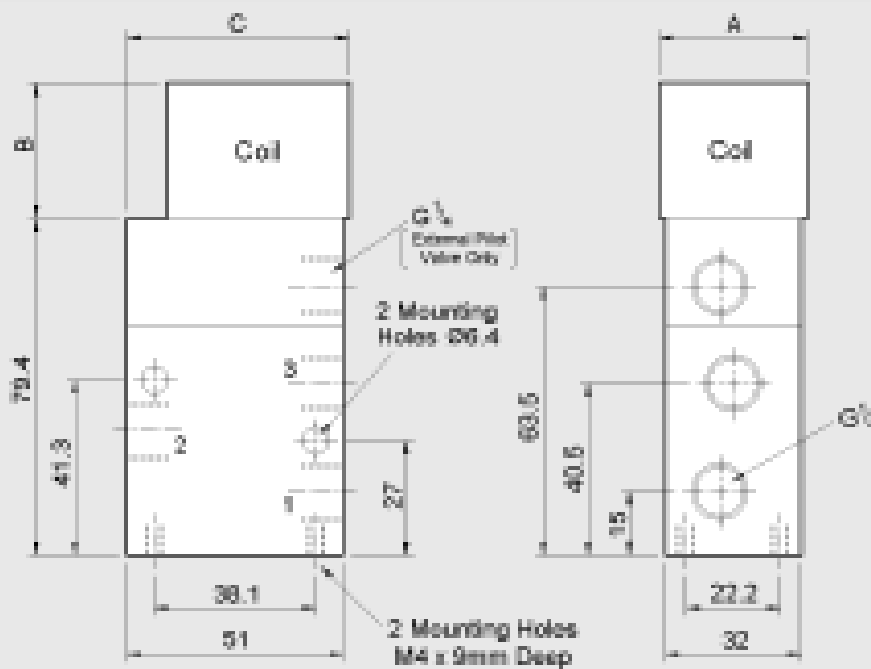
No Voltage (no coil)

0

415v AC (50/60 Hz)

3

Remote Mounting, 1/4", 3/2 Function Poppet Valve



Coil Type	Dimensions (mm)		
	A	B	C
Plug & Socket	35	55	88
Terminal Box	35	55	73
ExN	35	55	73
EExd	52	75	93
EExia	35	75	73
EExm	35	55	80

Material Specification	Standard
Body and End Caps	Black Anodised Aluminium (Dural)
Poppet Insert	Brass
Jet	Brass
Seals	Nitrile

Valve Specification	Standard
Port Connection Size	1/4" BSP
Working Pressure Internal Pilot Version	2 to 8 bar
Working Pressure External Pilot Version	0 to 8 bar
Minimum External Pilot Pressure	2 bar
Cv Factor	1.2
Flow Rate (at 6 bar with 1 bar pressure drop)	1246 l/min
Maximum Ambient Temperature	+60°C
Minimum Working Temperature	-10°C

Non-Standard Features and Options

There are non-standard alternatives available in addition to those listed within this datasheet for:

- Material Specification
- Valve Specification
- Options
- Voltages

Please refer to Section 9 in this catalogue for details of these alternatives.

Coil Type	Plug & Socket	Terminal Box	ExN	EExd	EExm	EExia
Area Class	Safe	Safe	Zone 2	Zones 1 & 2	Zones 1 & 2	Zones 0, 1 & 2
Area Category	N/A	N/A	ExN II T4/T6	EExd IIC T4/T6	EExm IIC T5	EExia IIC T6
Ingress Protection	IP65	IP65	IP65	IP66	IP65	IP65
Cable Entry	PG.9	M20 x 1.5	M20 x 1.5	M20 x 1.5	Flying Leads	M20 x 1.5
Ambient Temp.	-10 to 60°C	-10 to 60°C	-10 to 40°C	-10 to 40°C	-10 to 65°C	-10 to 65°C
Coil Class	F	F	F	F	F	F