

# Remote Mounting, 1/2", 5/3 Function Solenoid Valve

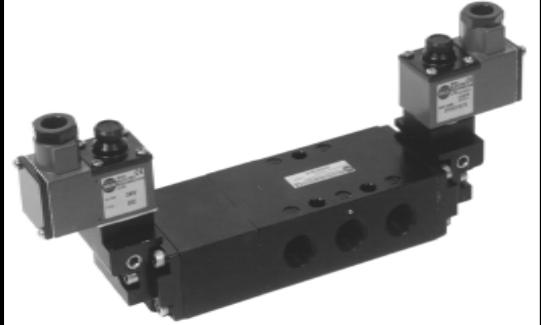
RGS

## Description

5 port 3 position, spring centering pilot operated solenoid valve.

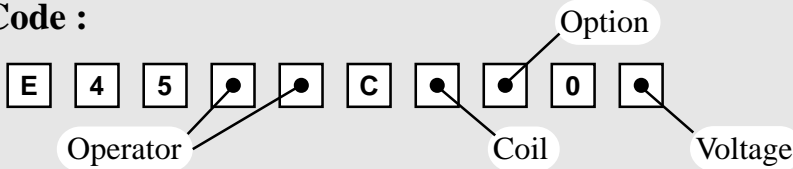
## Features

- Internal or External pilot air connection.
- Interchangeable CNOMO interface coils, including various hazardous area options.
- Convenient fixing holes to enable bracket mounting.
- Optional all ports open or all ports closed in center position.
- Pilot Exhaust Dust Caps fitted as standard.



Valve is illustrated with Terminal Box coil units

## Product Code :

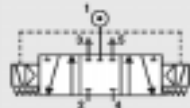


See below for product code details  
Any of the below options that are not required enter '0' in relevant box.

### Operator

#### Options:

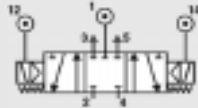
All ports sealed mid position, internal pilot air feed



#### Code:

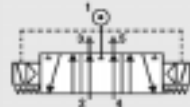
1 4

All ports sealed mid position, external pilot air connection



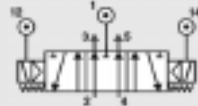
4 0

Inlet sealed open exhaust mid position, internal pilot air feed



1 5

Inlet sealed open exhaust mid position, external pilot air connection



5 0

### Option

#### Options:

Lever Manual Override

C

Push Button Manual Override

D

Screwdriver Manual Override

S

No Option Required

0

### Coil

#### Coil:

#### Code:

EExia (BASEEFA)

A

EExm

#### Code:

9

EExia (FM)

U

ExN

N

EExia (SAA)

W

Plug & Socket

P

EExia (CSA)

V

MC30

K

EExd

D

Terminal Box

B

No Coil (no jet)

0

No Coil (with jet)

2

### Voltage

#### Voltage:

12v DC

#### Code:

A

#### Voltage:

24v AC (50/60 Hz)

#### Code:

R

12v DC Low Power

G

48v AC (50/60 Hz)

S

24v DC

B

110v AC (50/60 Hz)

T

24v DC Low Power

H

240v AC (50/60 Hz)

U

No Voltage (no coil)

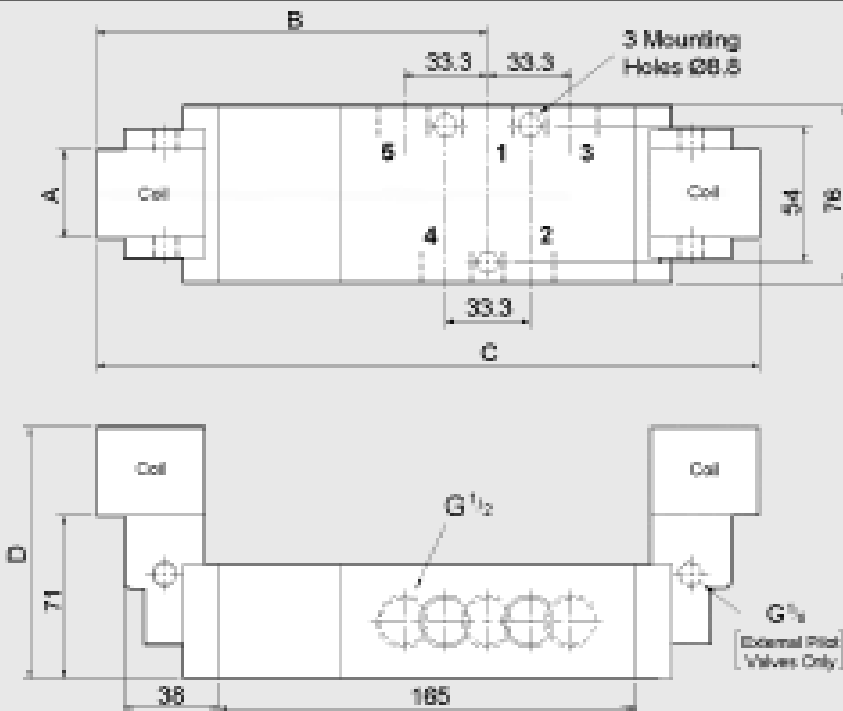
0

415v AC (50/60 Hz)

3

# Remote Mounting, 1/2", 5/3 Function Solenoid Valve

**RGS**



Coil Type	Dimensions (mm)			
	A	B	C	D
Plug & Socket	35	187	327	120
Terminal Box	35	177	307	120
ExN	35	177	307	120
EExd	52	197	347	140
EExia	35	177	307	140
EExm	35	184	321	120

Material Specification	Standard
Body and End Caps	Black Anodised Aluminium (Dural)
Spool	Hard Anodised Aluminium PTFE impregnated
Jet	Brass
Spacers	Glass filled Acetal
Seals	Nitrile
Spring	Stainless Steel

Valve Specification	Standard
Port Connection Size	1/2" BSP
Working Pressure Internal Pilot Version	3 to 8 bar
Working Pressure External Pilot Version	0 to 8 bar
Minimum External Pilot Pressure	3 bar
Cv Factor	3.5
Flow Rate (at 6 bar with 1 bar pressure drop)	3534 l/min
Maximum Ambient Temperature	+60°C
Minimum Working Temperature	-10°C

## Non-Standard Features and Options

There are non-standard alternatives available in addition to those listed within this datasheet for:

- Material Specification
- Valve Specification
- Options
- Voltages

Please refer to Section 9 in this catalogue for details of these alternatives.

Coil Type	Plug & Socket	Terminal Box	ExN	EExd	EExm	EExia
Area Class	Safe	Safe	Zone 2	Zones 1 & 2	Zones 1 & 2	Zones 0, 1 & 2
Area Category	N/A	N/A	ExN II T4/T6	EExd IIC T4/T6	EExm IIC T5	EExia IIC T6
Ingress Protection	IP65	IP65	IP65	IP66	IP65	IP65
Cable Entry	PG.9	M20 x 1.5	M20 x 1.5	M20 x 1.5	Flying Leads	M20 x 1.5
Ambient Temp.	-10 to 60°C	-10 to 60°C	-10 to 40°C	-10 to 40°C	-10 to 65°C	-10 to 65°C
Coil Class	F	F	F	F	F	F