

# Remote Mounting, 1", 3/2 Function Solenoid Valve

**RGS**

## Description

3 port 2 position, pilot operated solenoid valve.

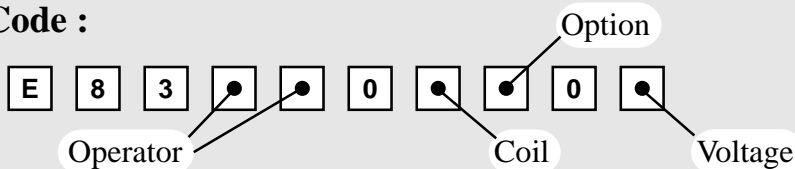
## Features

- Internal or External pilot air connection.
- Interchangeable coils, including various hazardous area options.
- Single coil spring return function or double coil stay put function.
- Convenient fixing holes to enable bracket mounting.



Valve is illustrated with a EPA200 Plug & Socket Coil

## Product Code :



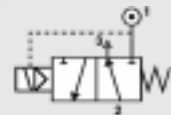
See below for product code details

*Any of the below options that are not required enter '0' in relevant box.*

### Operator

#### Options:

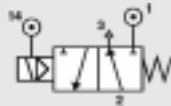
Spring return, internal pilot air feed



#### Code:

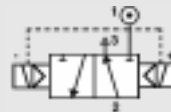
[1] [8]

Spring return, external pilot air connection



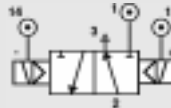
[8] [0]

Double solenoid, internal pilot air feed



[1] [9]

Double solenoid, external pilot air connection



[9] [0]

### Option

#### Options:

Lever Manual Override

[C]

Push Button Manual Override

[D]

Tamperproof Manual Override

[1]

No Option Required

[0]

### Coil

#### Coil:

#### Code:

EExia (BASEEFA)

[A]

#### Coil:

#### Code:

EExm

[9]

EExia (FM)

[U]

ExN

[N]

EExia (SAA)

[W]

Plug & Socket

[P]

EExia (CSA)

[V]

Terminal Box

[B]

EExd

[D]

No Coil (no jet)

[0]

No Coil (with jet)

[2]

### Voltage

#### Voltage:

#### Code:

12v DC

[A]

#### Voltage:

#### Code:

24v AC (50/60 Hz)

[R]

12v DC Low Power

[G]

48v AC (50/60 Hz)

[S]

24v DC

[B]

110v AC (50/60 Hz)

[T]

24v DC Low Power

[H]

240v AC (50/60 Hz)

[U]

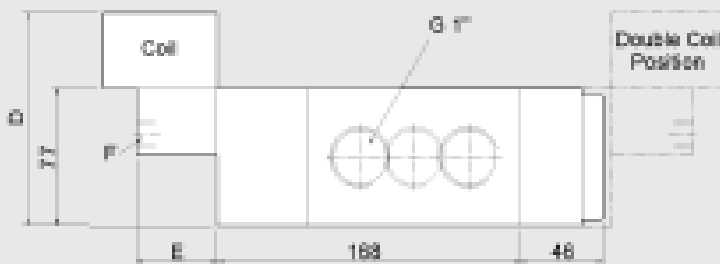
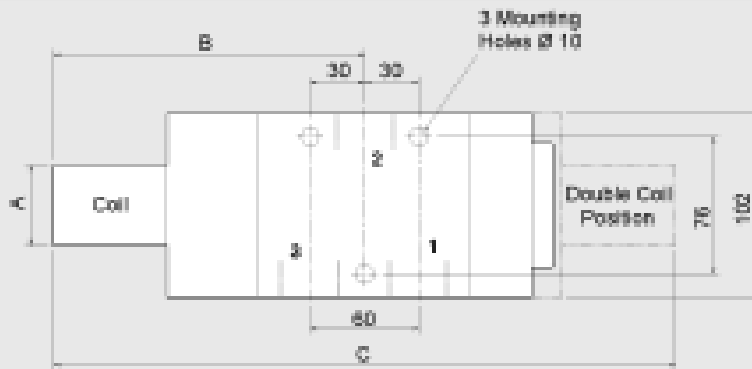
No Voltage (no coil)

[0]

415v AC (50/60 Hz)

[3]

# Remote Mounting, 1", 3/2 Function Solenoid Valve



Coil Type	Dimensions (mm)					
	A	B	C	D	E	F
Plug & Socket	45	193	386	134	45	G <sup>1/4</sup>
Terminal Box	35	175	350	132	35	G <sup>1/8</sup>
ExN	35	175	350	132	35	G <sup>1/8</sup>
EExd	52	195	390	152	35	G <sup>1/8</sup>
EExia	35	175	350	152	35	G <sup>1/8</sup>
EExm	35	182	364	132	35	G <sup>1/8</sup>

Material Specification	Standard
Body and End Caps	Black Anodised Aluminium (Dural)
Spool	Hard Anodised Aluminium PTFE impregnated
Jet	Brass
Spacers	Natural Anodised Aluminium (Dural)
Seals	Nitrile
Spring	Stainless Steel

Valve Specification	Standard
Port Connection Size	1" BSP
Working Pressure Internal Pilot Version	3 to 8 bar
Working Pressure External Pilot Version	0 to 8 bar
Minimum External Pilot Pressure	3 bar
Cv Factor	10
Flow Rate (at 6 bar with 1 bar pressure drop)	10384 l/min
Maximum Ambient Temperature	+60°C
Minimum Working Temperature	-10°C

## Non-Standard Features and Options

There are non-standard alternatives available in addition to those listed within this datasheet for:

- Material Specification
- Valve Specification
- Options
- Voltages

Please refer to Section 9 in this catalogue for details of these alternatives.

Coil Type	Plug & Socket	Terminal Box	ExN	EExd	EExm	EExia
Area Class	Safe	Safe	Zone 2	Zones 1 & 2	Zones 1 & 2	Zones 0, 1 & 2
Area Category	N/A	N/A	ExN II T4/T6	EExd IIC T4/T6	EExm IIC T5	EExia IIC T6
Ingress Protection	IP65	IP65	IP65	IP66	IP65	IP65
Cable Entry	PG.9	M20 x 1.5	M20 x 1.5	M20 x 1.5	Flying Leads	M20 x 1.5
Ambient Temp.	-10 to 60°C	-10 to 60°C	-10 to 40°C	-10 to 40°C	-10 to 65°C	-10 to 65°C
Coil Class	F	F	F	F	F	F