

Remote Mounting, 1", 5/3 Function Solenoid Valve

RGS

Description

5 port 3 position, spring centering pilot operated solenoid valve.

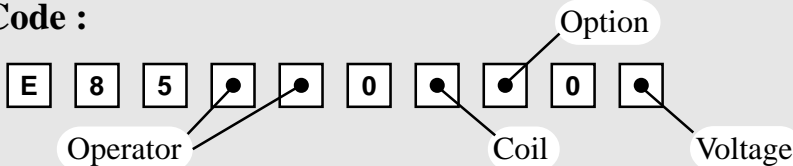
Features

- Internal or External pilot air connection.
- Interchangeable coils, including various hazardous area options.
- Convenient fixing holes to enable bracket mounting.
- Optional, all ports open or all port closed in center position.



Valve is illustrated with EPA200 Plug & Socket coil units

Product Code :

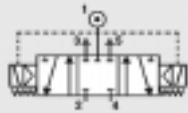


See below for product code details
Any of the below options that are not required enter '0' in relevant box.

Operator

Options:

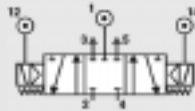
All ports sealed mid position, internal pilot air feed



Code:

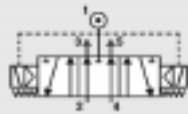
1 4

All ports sealed mid position, external pilot air connection



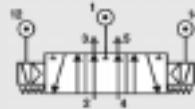
4 0

Inlet sealed open exhaust mid position, internal pilot air feed



1 5

Inlet sealed open exhaust mid position, external pilot air connection



5 0

Option

Options:

Lever Manual Override

C

Push Button Manual Override

D

Tamperproof Manual Override

1

No Option Required

0

Coil

Coil:

Code:

EExia (BASEEFA) **A**

EExia (FM) **U**

EExia (SAA) **W**

EExia (CSA) **V**

EEExd **D**

No Coil (no jet) **0**

Coil:

Code:

EEExm **9**

ExN **N**

Plug & Socket **P**

Terminal Box **B**

No Coil (with jet) **2**

Voltage

Voltage:

12v DC **A**

12v DC Low Power **G**

24v DC **B**

24v DC Low Power **H**

No Voltage Required **0**

Code:

Voltage:

24v AC (50/60 Hz) **R**

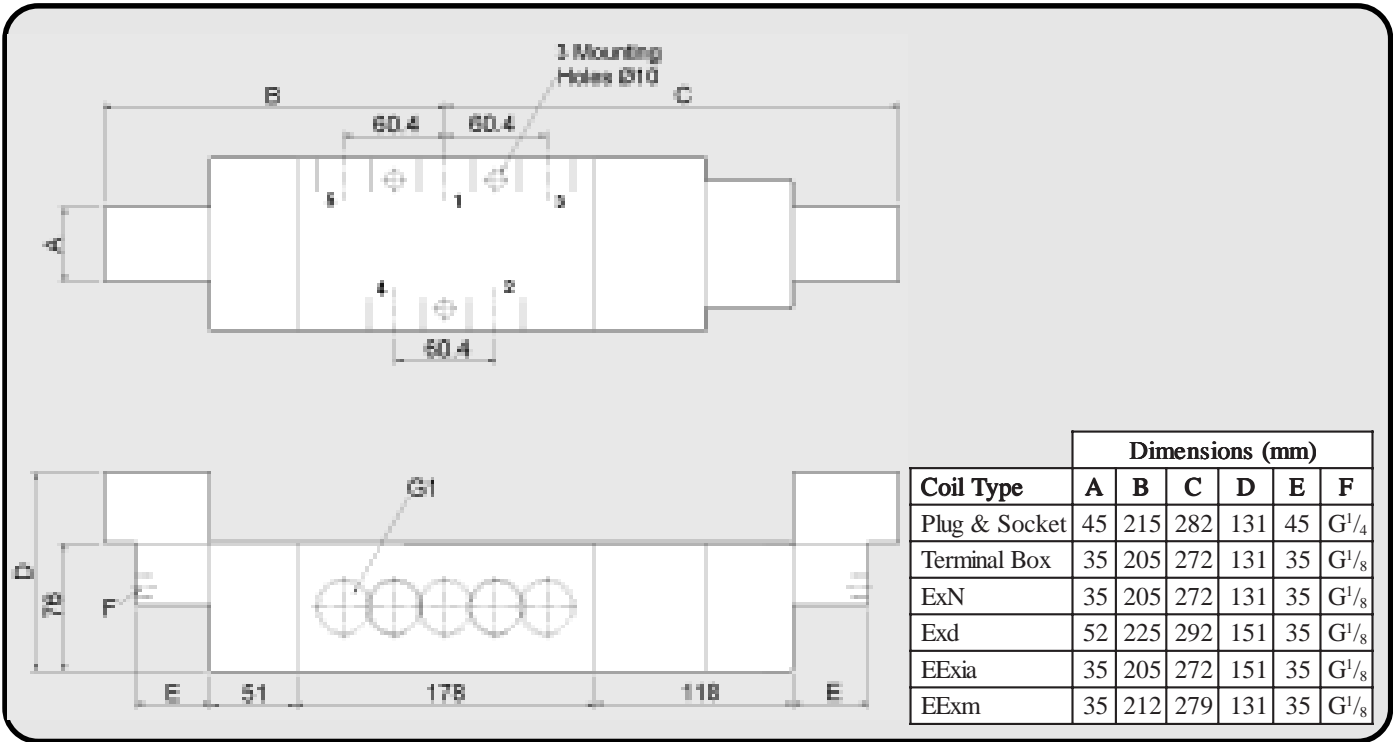
48v AC (50/60 Hz) **S**

110v AC (50/60 Hz) **T**

240v AC (50/60 Hz) **U**

415v AC (50/60 Hz) **3**

Remote Mounting, 1", 5/3 Function Solenoid Valve



Material Specification	Standard
Body and End Caps	Black Anodised Aluminium (Dural)
Spool	Hard Anodised Aluminium PTFE impregnated
Jet	Brass
Spacers	Natural Anodised Aluminium (Dural)
Seals	Nitrile
Spring	Stainless Steel

Valve Specification	Standard
Port Connection Size	1" BSP
Working Pressure Internal Pilot Version	3 to 8 bar
Working Pressure External Pilot Version	0 to 8 bar
Minimum External Pilot Pressure	3 bar
Cv Factor	10
Flow Rate (at 6 bar with 1 bar pressure drop)	10384 l/min
Maximum Ambient Temperature	+60°C
Minimum Working Temperature	-10°C

Non-Standard Features and Options

There are non-standard alternatives available in addition to those listed within this datasheet for:

- Material Specification
- Valve Specification
- Options
- Voltages

Please refer to Section 9 in this catalogue for details of these alternatives.

Coil Type	Plug & Socket	Terminal Box	ExN	EExd	EExm	EExia
Area Class	Safe	Safe	Zone 2	Zones 1 & 2	Zones 1 & 2	Zones 0, 1 & 2
Area Category	N/A	N/A	ExN II T4/T6	EExd IIC T4/T6	EExm IIC T5	EExia IIC T6
Ingress Protection	IP65	IP65	IP65	IP66	IP65	IP65
Cable Entry	PG.9	M20 x 1.5	M20 x 1.5	M20 x 1.5	Flying Leads	M20 x 1.5
Ambient Temp.	-10 to 60°C	-10 to 60°C	-10 to 40°C	-10 to 40°C	-10 to 65°C	-10 to 65°C
Coil Class	F	F	F	F	F	F