

# Manifold Mounted, M5, 3/2 Function Solenoid Valves



## Description

3 port 2 position, Universal sub-base Mount solenoid valve.

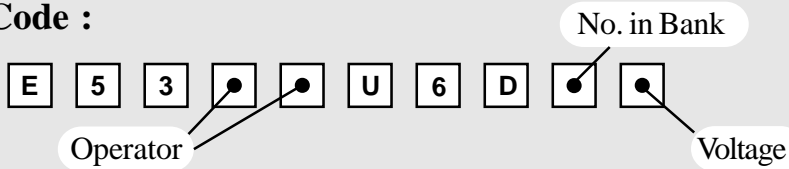
## Features

- Internal pilot air connection.
- Single coil spring return function or double coil stay put function.
- 1/4" BSP connection ports.
- Compact arrangement.
- Main air isolating screw.
- Spring return manual override.



Valve Assembly is illustrated with Mini Plug & Socket Coil Units

## Product Code :

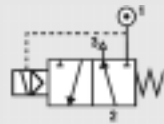


See below for product code details  
Any of the below options that are not required enter '0' in relevant box.

### Operator

#### Options:

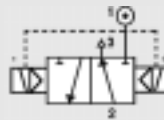
Spring return, internal pilot air feed



#### Code:

1 8

Double solenoid, internal pilot air feed



1 9

### No. in Bank

#### Options:

Bank of two (2)

2

Bank of three (3)

3

etc ....

Bank of eight (8)

8

Bank of nine (9)

9

Bank of ten (10)

A

### Voltage

#### Voltage:

#### Code:

12v DC

A

24v DC

B

48v DC

C

110v DC

D

#### Voltage:

#### Code:

24v AC (50/60 Hz)

R

48v AC (50/60 Hz)

S

110v AC (50/60 Hz)

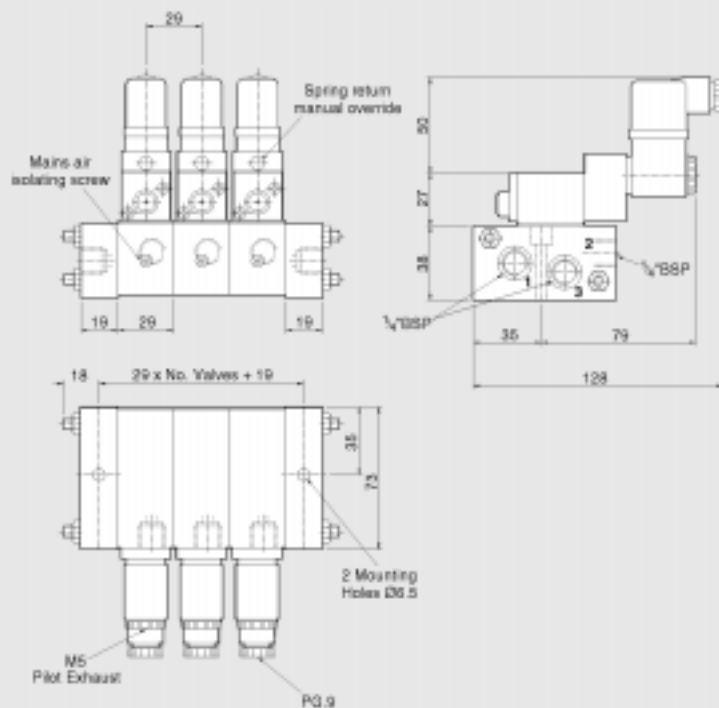
T

240v AC (50/60 Hz)

U

# Manifold Mounted, M5, 3/2 Function Solenoid Valves

**RGS**



Material Specification	Standard
Body and End Caps	Black Anodised Aluminium (Dural)
Spool	Hard Anodised Aluminium PTFE impregnated
Spacers	Glass filled Acetal
Seals	Nitrile
Spring	Stainless Steel
Tie rods & nuts	Stainless Steel

Valve Specification	Standard
Port Connection Size	1/4" BSP
Working Pressure Internal Pilot Version	3 to 8 bar
Cv Factor	0.4
Flow Rate (at 6 bar with 1 bar pressure drop)	382 l/min
Maximum Ambient Temperature	+60°C
Minimum Working Temperature	-10°C

Coil Type	Mini Plug & Socket
Area Class	Safe
Area Category	N/A
Ingress Protection	IP65
Cable Entry	PG.9
Ambient Temp.	-10 to 60°C
Coil Class	F