

# Manifold Mounted, M5, 5/2 Function Solenoid Valves



## Description

5 port 2 position, Universal sub-base mount solenoid valve.

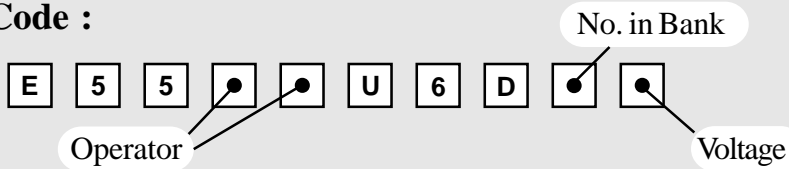
## Features

- Internal pilot air connection.
- Single coil spring return function or double coil stay put function.
- 1/4" BSP inlet and exhaust ports, 1/8" BSP outlet ports.
- Compact arrangement.
- Main air isolating screw.
- Spring return manual override.



Valve Assembly is illustrated with Mini Plug & Socket Coil Units

## Product Code :

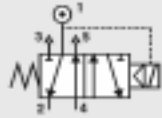


See below for product code details  
*Any of the below options that are not required enter '0' in relevant box.*

## Operator

### Options:

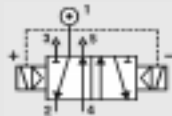
Spring return, internal pilot air feed



### Code:

[1] [8]

Double solenoid, internal pilot air feed



[1] [9]

## No. in Bank

### Options:

Bank of two (2)

[2]

Bank of three (3)

[3]

etc ...

Bank of eight (8)

[8]

Bank of nine (9)

[9]

Bank of ten (10)

[A]

## Voltage

### Voltage:

### Code:

12v DC

[A]

24v DC

[B]

48v DC

[C]

110v DC

[D]

### Voltage:

### Code:

24v AC (50/60 Hz)

[R]

48v AC (50/60 Hz)

[S]

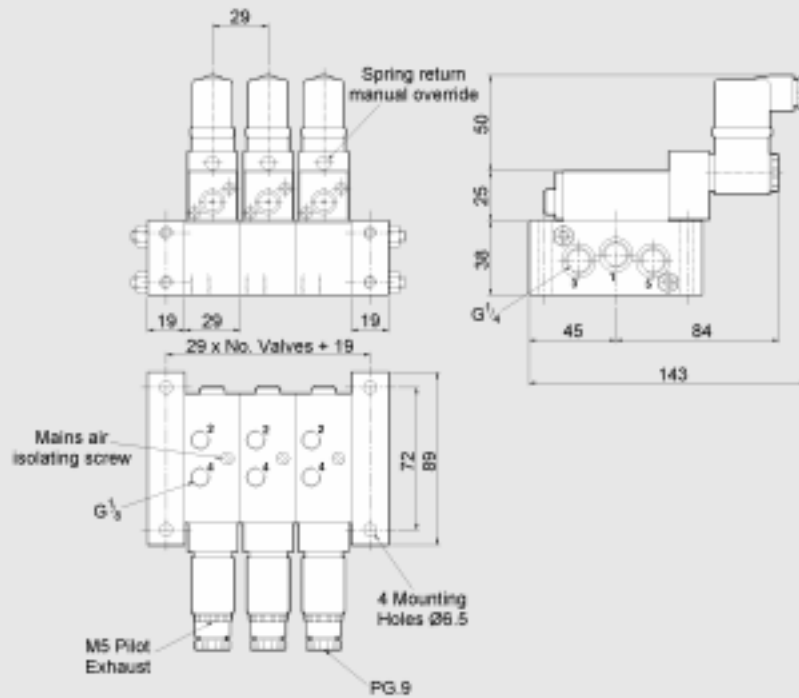
110v AC (50/60 Hz)

[T]

240v AC (50/60 Hz)

[U]

# Manifold Mounted, M5, 5/2 Function Solenoid Valves



Material Specification	Standard
Body and End Caps	Black Anodised Aluminium (Dural)
Spool	Hard Anodised Aluminium PTFE impregnated
Spacers	Glass filled Acetal
Seals	Nitrile
Spring	Stainless Steel
Tie rods & nuts	Stainless Steel

Valve Specification	Standard
Inlet & Exhaust Port Connection Size	1/4" BSP
Outlet Port Connection Size	1/8" BSP
Working Pressure Internal Pilot Version	3 to 8 bar
Cv Factor	0.4
Flow Rate (at 6 bar with 1 bar pressure drop)	382 l/min
Maximum Ambient Temperature	+60°C
Minimum Working Temperature	-10°C

Coil Type	Plug & Socket
Area Class	Safe
Area Category	N/A
Ingress Protection	IP65
Cable Entry	PG.9
Ambient Temp.	-10 to 60°C
Coil Class	F