

Manifold Mounted, 1/8", 5/2 Function Solenoid Valves **RGS**

Description

5 port 2 position, Universal sub-base mount solenoid valve.

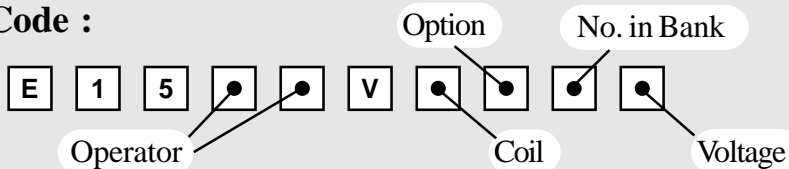
Features

- Internal or External pilot air connection.
- Interchangeable coils, including various hazardous area options.
- 1/4" BSP Inlet and Exhaust connections and 1/8" BSP Outlets.
- Various manual override options.
- Mains air isolating screw.
- Single coil spring return function or double coil stay put function.
- Pilot exhaust dust caps fitted as standard.
- Interchangeable CNOMO interface coil units, including hazardous area options.



Valve assembly is illustrated with Plug and Socket coil units.

Product Code :

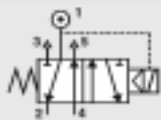


See below for product code details
Any of the below options that are not required enter '0' in relevant box.

Operator

Options:

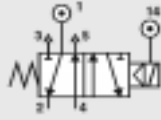
Spring return, internal pilot air feed



Code:

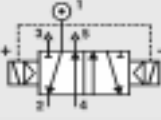
1 8

Spring return, external pilot air connection



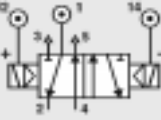
8 0

Double solenoid, internal pilot air feed



1 9

Double solenoid, external pilot air connection



9 0

Option

Options:

Screwdriver Override (Standard)

S

Push Button Manual Override

D

Lever Manual Override

C

No Option Required

0

Code:

No. in Bank

Options:

Bank of two (2)

2

Bank of three (3)

3

etc

Bank of eight (8)

8

Bank of nine (9)

9

Bank of ten (10)

A

Coil

Coil:

Code:

EExia (BASEEFA)

A

EExm

Code:

9

EExia (FM)

U

ExN

N

EExia (SAA)

W

Plug & Socket

P

EExia (CSA)

V

MC30 Plug & Socket

K

EExd

D

Terminal Box

B

Voltage

Voltage:

12v DC

A

12v DC Low Power

G

24v DC

B

24v DC Low Power

H

Code:

Voltage:

24v AC (50/60 Hz)

R

48v AC (50/60 Hz)

S

110v AC (50/60 Hz)

T

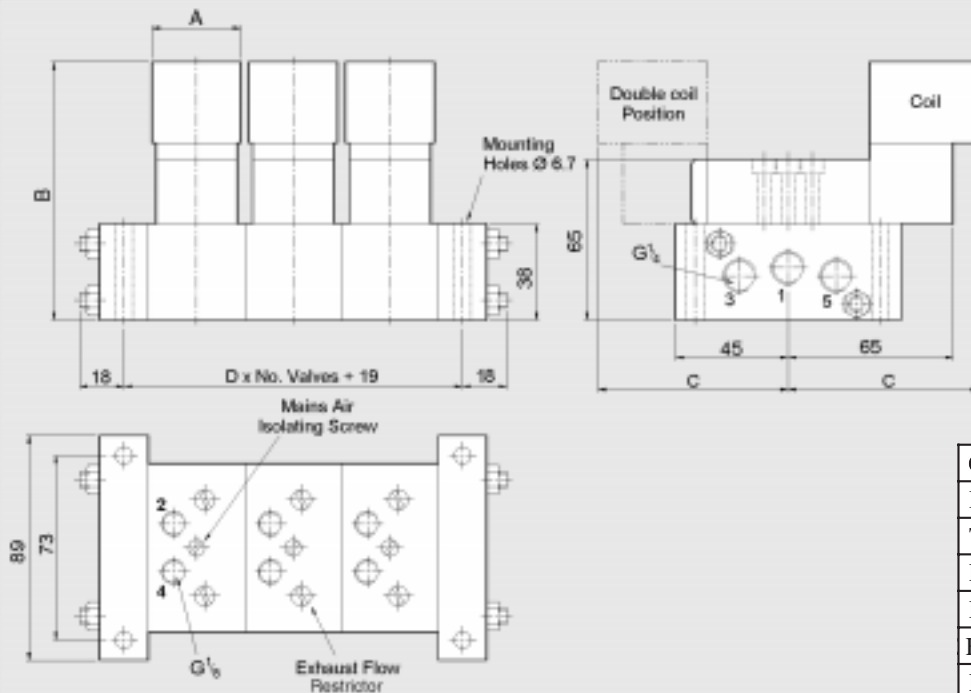
240v AC (50/60 Hz)

U

415v AC (50/60 Hz)

3

Manifold Mounted, 1/8", 5/2 Function Solenoid Valves **RGS**



| Coil Type | Dimensions (mm) | | | |
|---------------|-----------------|-----|-----|----|
| | A | B | C | D |
| Plug & Socket | 35 | 147 | 115 | 38 |
| Terminal Box | 35 | 139 | 116 | 38 |
| ExN | 35 | 139 | 116 | 38 |
| EExd | 52 | 154 | 132 | 53 |
| EExia | 35 | 139 | 123 | 38 |
| EExm | 35 | 147 | 110 | 38 |

| Material Specification | Standard |
|------------------------|--|
| Body and End Caps | Black Anodised Aluminium (Dural) |
| Spool | Hard Anodised Aluminium PTFE impregnated |
| Jet | Brass |
| Spacers | Glass filled Acetal |
| Seals | Nitrile |
| Spring | Stainless Steel |
| Tie rods & nuts | Stainless Steel |

| Valve Specification | Standard |
|---|------------|
| Inlet and Exhaust Port Connection Size | 1/4" BSP |
| Outlet Port Connection Size | 1/8" BSP |
| Working Pressure Internal Pilot Version | 3 to 8 bar |
| Working Pressure External Pilot Version | 0 to 8 bar |
| Minimum External Pilot Pressure | 3 bar |
| Cv Factor | 0.4 |
| Flow Rate (at 6 bar with 1 bar pressure drop) | 382 l/min |
| Maximum Ambient Temperature | +60°C |
| Minimum Working Temperature | -10°C |

Non-Standard Features and Options

There are non-standard alternatives available in addition to those listed within this datasheet for:

- Material Specification
- Valve Specification
- Options
- Voltages

Please refer to Section 9 in this catalogue for details of these alternatives.

| Coil Type | Plug & Socket | Terminal Box | ExN | EExd | EExm | EExia |
|--------------------|---------------|--------------|--------------|----------------|--------------|----------------|
| Area Class | Safe | Safe | Zone 2 | Zones 1 & 2 | Zones 1 & 2 | Zones 0, 1 & 2 |
| Area Category | N/A | N/A | ExN II T4/T6 | EExd IIC T4/T6 | EExm IIC T5 | EExia IIC T6 |
| Ingress Protection | IP65 | IP65 | IP65 | IP66 | IP65 | IP65 |
| Cable Entry | PG.9 | M20 x 1.5 | M20 x 1.5 | M20 x 1.5 | Flying Leads | M20 x 1.5 |
| Ambient Temp. | -10 to 60°C | -10 to 60°C | -10 to 40°C | -10 to 40°C | -10 to 65°C | -10 to 65°C |
| Coil Class | F | F | F | F | F | F |