

Manifold Mounted, 1/4", 3/2 Function Solenoid Valves **RGS**

Description

3 port 2 position, Universal sub-base mount solenoid valve.

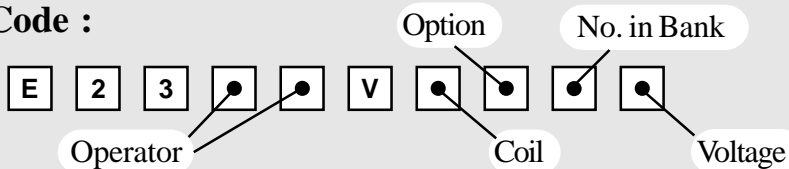
Features

- Interchangeable coils, including various hazardous area options.
- 3/8" BSP Inlet and Exhaust connections and 1/4" BSP Outlets.
- Various manual override options.
- Mains air isolating screw.
- Single coil spring return function or double coil stay put function.
- Pilot exhaust dust caps fitted as standard.
- Interchangeable CNOMO interface coil units, including hazardous area options.



Valve Assembly is illustrated with Plug and Socket Coil Units

Product Code :

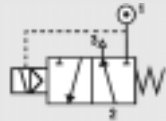


See below for product code details
Any of the below options that are not required enter '0' in relevant box.

Operator

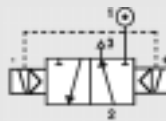
Options:

Spring return, internal pilot air feed



Code: **1 8**

Double solenoid, internal pilot air feed



Code: **1 9**

Option

Options:

Screwdriver Override (Standard)

Code: **S**

Push Button Manual Override

Code: **D**

Lever Manual Override

Code: **C**

No Option Required

Code: **0**

No. in Bank

Options:

Bank of two (2)

Code: **2**

Bank of three (3)

Code: **3**

etc

Bank of eight (8)

Code: **8**

Bank of nine (9)

Code: **9**

Bank of ten (10)

Code: **A**

Coil

Coil:

Code:

EExia (BASEEFA)

Code: **A**

EExm

Code: **9**

EExia (FM)

Code: **U**

EExN

Code: **N**

EExia (SAA)

Code: **W**

Plug & Socket

Code: **P**

EExia (CSA)

Code: **V**

Terminal Box

Code: **B**

EExd

Code: **D**

Voltage

Voltage:

Code:

12v DC

Code: **A**

12v DC Low Power

Code: **G**

24v DC

Code: **B**

24v DC Low Power

Code: **H**

Voltage:

Code:

24v AC (50/60 Hz)

Code: **R**

48v AC (50/60 Hz)

Code: **S**

110v AC (50/60 Hz)

Code: **T**

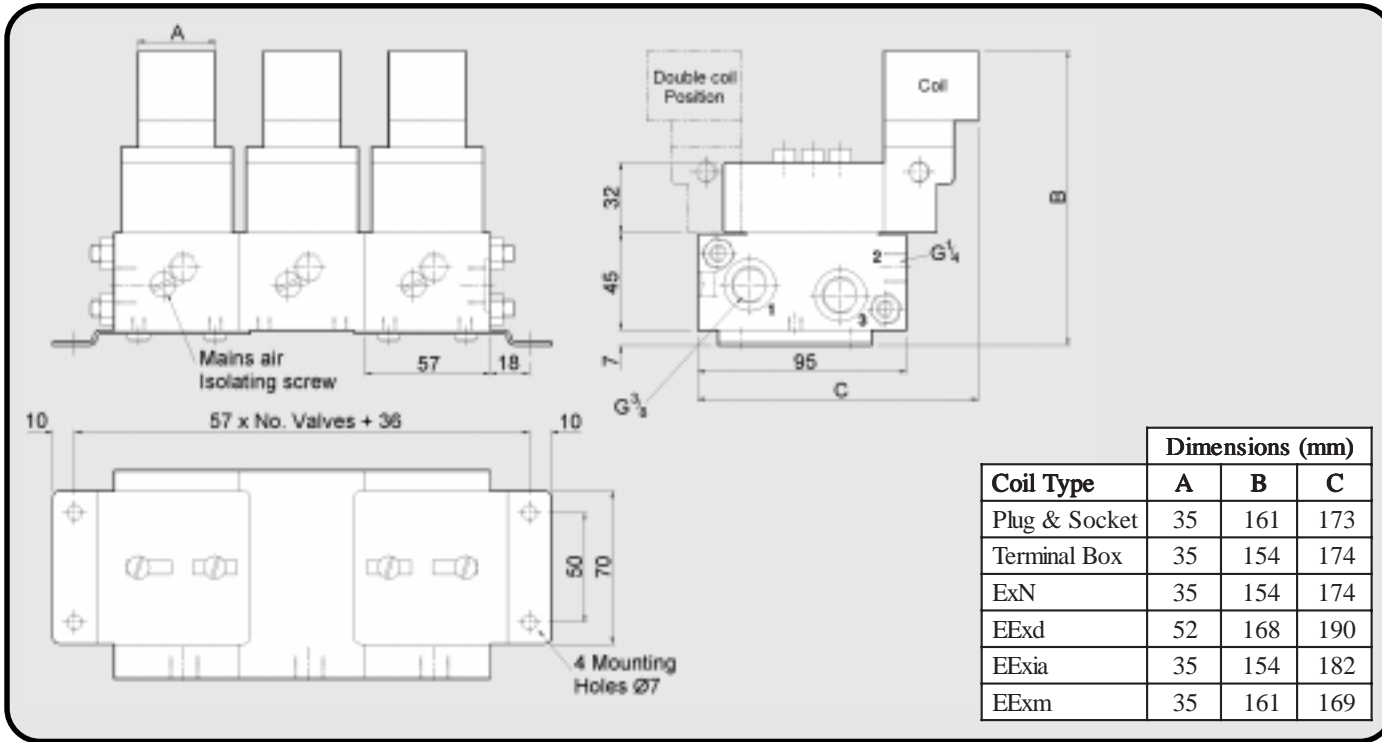
240v AC (50/60 Hz)

Code: **U**

415v AC (50/60 Hz)

Code: **3**

Manifold Mounted, 1/4", 3/2 Function Solenoid Valves **RGS**



Material Specification	Standard
Body and End Caps	Black Anodised Aluminium (Dural)
Spool	Hard Anodised Aluminium PTFE impregnated
Jet	Brass
Spacers	Glass filled Acetal
Seals	Nitrile
Spring	Stainless Steel
Tie rods & nuts	Stainless Steel

Valve Specification	Standard
Inlet and Exhaust Port Connection Size	3/8" BSP
Outlet Port Connection Size	1/4" BSP
Working Pressure	3 to 8 bar
Cv Factor	1.2
Flow Rate (at 6 bar with 1 bar pressure drop)	1246 l/min
Maximum Ambient Temperature	+60°C
Minimum Working Temperature	-10°C

Non-Standard Features and Options

There are non-standard alternatives available in addition to those listed within this datasheet for:

- Material Specification
- Valve Specification
- Options
- Voltages

Please refer to Section 9 in this catalogue for details of these alternatives.

Coil Type	Plug & Socket	Terminal Box	ExN	EExd	EExm	EExia
Area Class	Safe	Safe	Zone 2	Zones 1 & 2	Zones 1 & 2	Zones 0, 1 & 2
Area Category	N/A	N/A	ExN II T4/T6	EExd IIC T4/T6	EExm IIC T5	EExia IIC T6
Ingress Protection	IP65	IP65	IP65	IP66	IP65	IP65
Cable Entry	PG.9	M20 x 1.5	M20 x 1.5	M20 x 1.5	Flying Leads	M20 x 1.5
Ambient Temp.	-10 to 60°C	-10 to 60°C	-10 to 40°C	-10 to 40°C	-10 to 65°C	-10 to 65°C
Coil Class	F	F	F	F	F	F