

Manifold Mounted, 1/4", 5/2 Function Solenoid Valves **RGS**

Description

5 port 2 position, Universal sub-base mount solenoid valve.

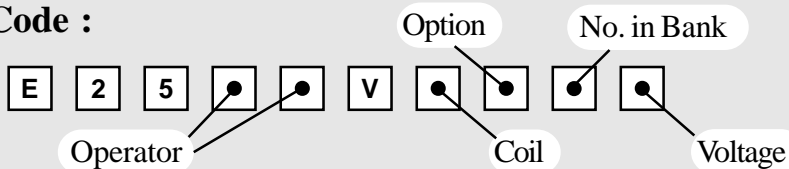
Features

- Interchangeable coils, including various hazardous area options.
- 3/8" BSP Inlet and Exhaust connections and 1/4" BSP Outlets.
- Various manual override options.
- Mains air isolating screw.
- Single coil spring return function or double coil stay put function.
- Pilot exhaust dust caps fitted as standard.
- Interchangeable CNOMO interface coil units, including hazardous area options.



Valve Assembly is illustrated with Plug and Socket Coil Units

Product Code :



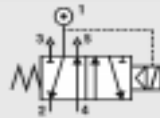
See below for product code details
Any of the below options that are not required enter '0' in relevant box.

Operator

Options:

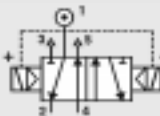
Code:

Spring return, internal pilot air feed



1 8

Double solenoid, internal pilot air feed



1 9

Option

Options:

Code:

Screwdriver Override (Standard)

S

Push Button Manual Override

D

Lever Manual Override

C

No Option Required

0

No. in Bank

Options:

Bank of two (2)

2

Bank of three (3)

3

etc

Bank of eight (8)

8

Bank of nine (9)

9

Bank of ten (10)

A

Coil

Coil:

Code:

Coil:

Code:

EExia (BASEEFA)

A

EExm

9

EExia (FM)

U

ExN

N

EExia (SAA)

W

Plug & Socket

P

EExia (CSA)

V

Terminal Box

B

EExd

D

Voltage

Voltage:

Code:

Voltage:

Code:

12v DC

A

24v AC (50/60 Hz)

R

12v DC Low Power

G

48v AC (50/60 Hz)

S

24v DC

B

110v AC (50/60 Hz)

T

24v DC Low Power

H

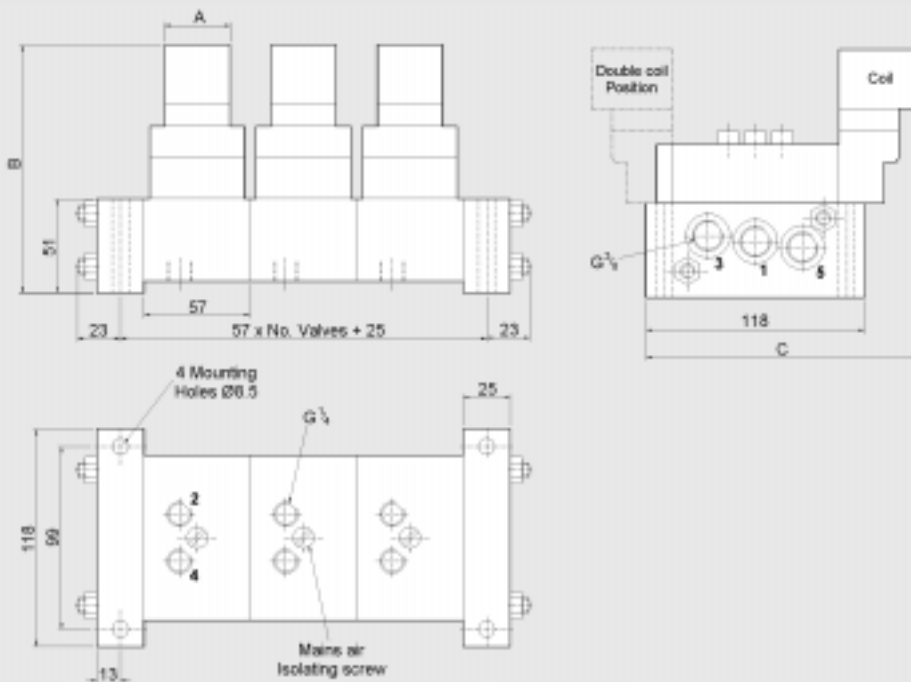
240v AC (50/60 Hz)

U

415v AC (50/60 Hz)

3

Manifold Mounted, 1/4", 5/2 Function Solenoid Valves **RGS**



Coil Type	Dimensions (mm)		
	A	B	C
Plug & Socket	35	160	193
Terminal Box	35	153	194
ExN	35	153	194
EExd	52	167	208
EExia	35	153	200
EExm	35	160	188

Material Specification	Standard
Body and End Caps	Black Anodised Aluminium (Dural)
Spool	Hard Anodised Aluminium PTFE impregnated
Jet	Brass
Spacers	Glass filled Acetal
Seals	Nitrile
Spring	Stainless Steel
Tie rods & nuts	Stainless Steel

Valve Specification	Standard
Inlet and Exhaust Port Connection Size	3/8" BSP
Outlet Port Connection Size	1/4" BSP
Working Pressure	3 to 8 bar
Cv Factor	1.2
Flow Rate (at 6 bar with 1 bar pressure drop)	1246 l/min
Maximum Ambient Temperature	+60°C
Minimum Working Temperature	-10°C

Non-Standard Features and Options

There are non-standard alternatives available in addition to those listed within this datasheet for:

- Material Specification
- Valve Specification
- Options
- Voltages

Please refer to Section 9 in this catalogue for details of these alternatives.

Coil Type	Plug & Socket	Terminal Box	ExN	EExd	EExm	EExia
Area Class	Safe	Safe	Zone 2	Zones 1 & 2	Zones 1 & 2	Zones 0, 1 & 2
Area Category	N/A	N/A	ExN II T4/T6	EExd IIC T4/T6	EExm IIC T5	EExia IIC T6
Ingress Protection	IP65	IP65	IP65	IP66	IP65	IP65
Cable Entry	PG.9	M20 x 1.5	M20 x 1.5	M20 x 1.5	Flying Leads	M20 x 1.5
Ambient Temp.	-10 to 60°C	-10 to 60°C	-10 to 40°C	-10 to 40°C	-10 to 65°C	-10 to 65°C
Coil Class	F	F	F	F	F	F